

Honeywell

SUPPLEMENT TO: OPTIFLEX CONNECT SETUP INSTRUCTIONS
RE: MODIFYING INTERNET OPTIONS

Modifying Internet Options for use with Optiflex

Prior to viewing an Optiflex image remotely from your computer, (using Optiflex Connect), it may be necessary to modify some settings on your PC to enable installation of Optiflex Connect ActiveX software.

Honeywell's Optiflex Connect ActiveX software is currently supported by the following operating systems: Windows 98/ME, Windows 2000 Professional, Windows XP Home/Professional. The software has not been tested on Windows 2003 Server.

Installation

Follow the steps below to install Optiflex Connect ActiveX software for Windows operating systems:

1. Make sure that you have *Administrator privileges* for the PC the software is being installed on.
2. Open **Internet Explorer** and from the top toolbar click on **Tools**. Select **Internet Options** from the drop-down menu.
3. From the **Internet Options** dialog box, click on the **Security** tab. In the **Select a Web content zone** box, click on **Trusted sites**.
4. To ensure that the security level for this zone has default values, click the **Default Level** button in the lower right-hand corner (see *Figure 1* below).

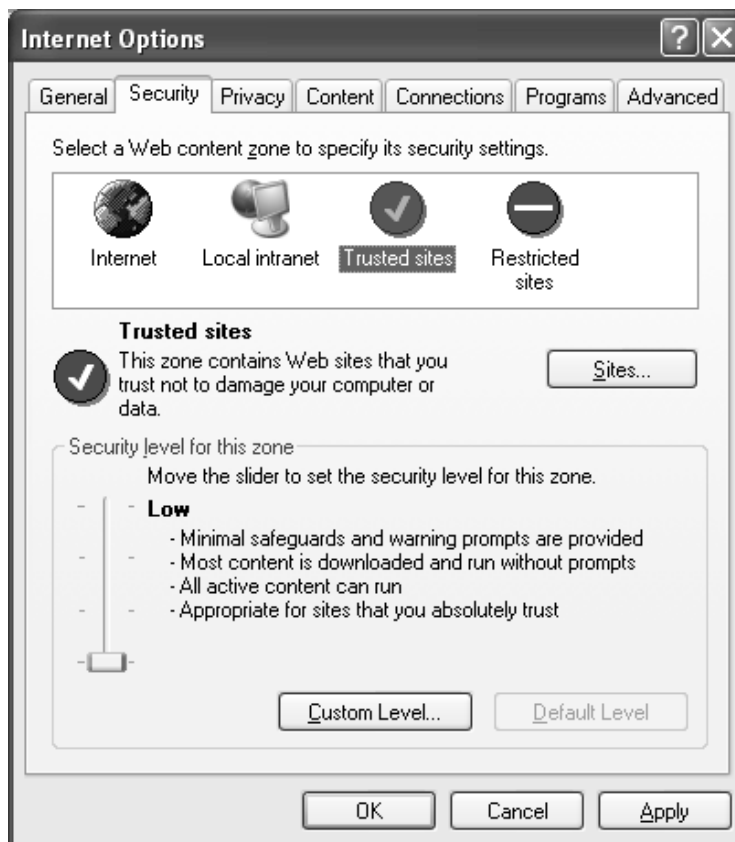


Figure 1 – Internet Options dialog box

SUPPLEMENT: Optiflex Connect (continued)

5. Click on the **Sites** button (the **Trusted Sites** dialog box is displayed) and deselect the **Require server verification** check box.
6. In the **Add this Web Site to the zone** box, enter the web sites for this zone exactly as follows: <http://symphony.alarmnet.com> and <https://symphony.alarmnet.com>, click on **Add** and click **OK** (see *Figure 2* below).

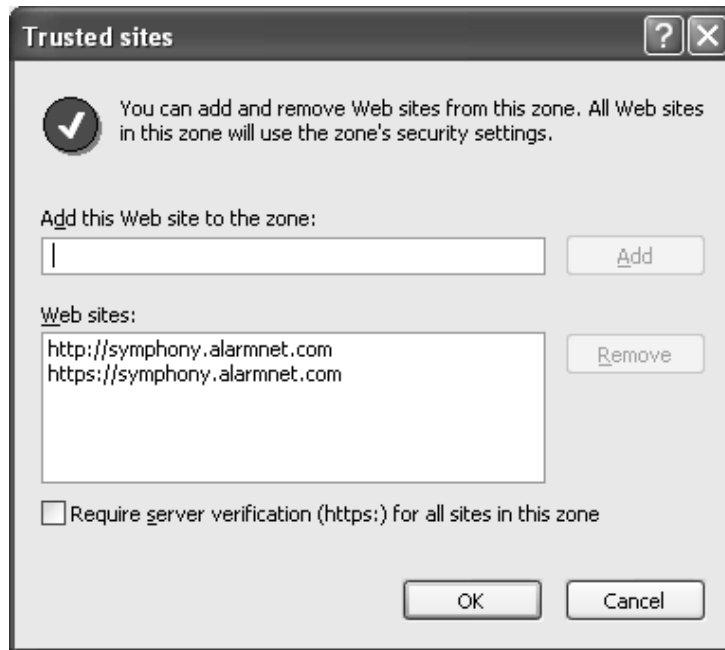


Figure 2- Trusted sites dialog box

7. The **Internet Options** dialogue box is displayed. Select the **Custom Level** button (the **Security Settings** dialog box is displayed) and scroll down to **Initialize and script ActiveX controls not marked as safe** and click on **Enable** (see *Figure 3a* below).



Figure 3a- Security Settings dialog box

8. With the **Security Settings** dialog box still open from the previous step, scroll down to **Display Mixed content** and click on **Enable** (see *Figure 3b* below).
9. Click **OK** to accept all of your changes and when the **Warning** box appears, select **Yes**, then **Apply** and **OK**.

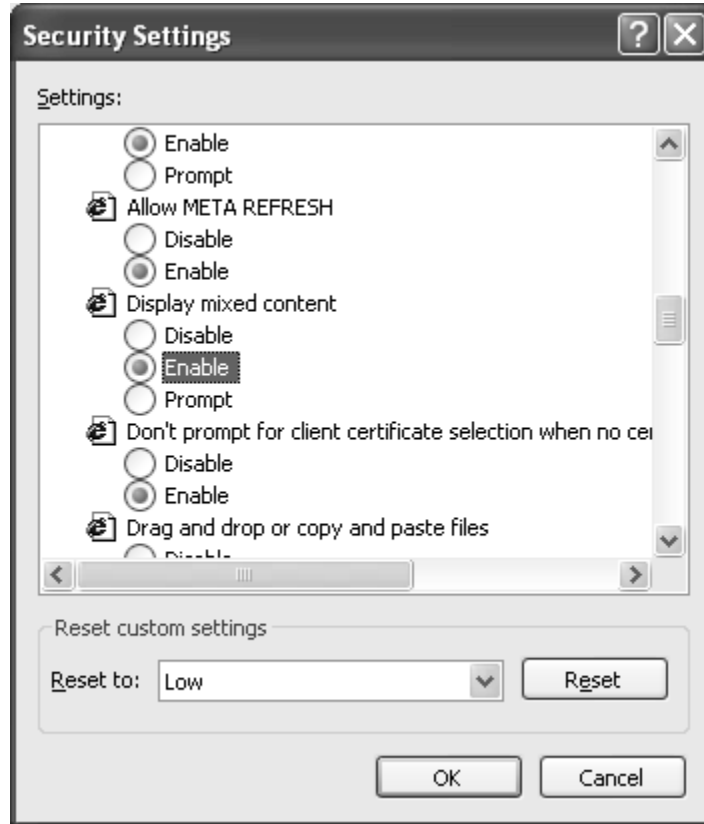


Figure 3b – Security Settings dialog box

10. Proceed to the Optiflex Connect web site located at: <http://symphony.alarmnet.com> and log in to the Optiflex Connect account. The first time you log in (or any time there is an ActiveX software update) you will see the following screen while ActiveX is being downloaded (see *Figure 4* below).



Figure 4 – Optiflex Connect web site

11. Once ActiveX software is loaded, you will be prompted to install it. You will see the following message from the Windows Operating System (see *Figure 5* below). Please read the certification and click **YES**. This step completes the installation process.

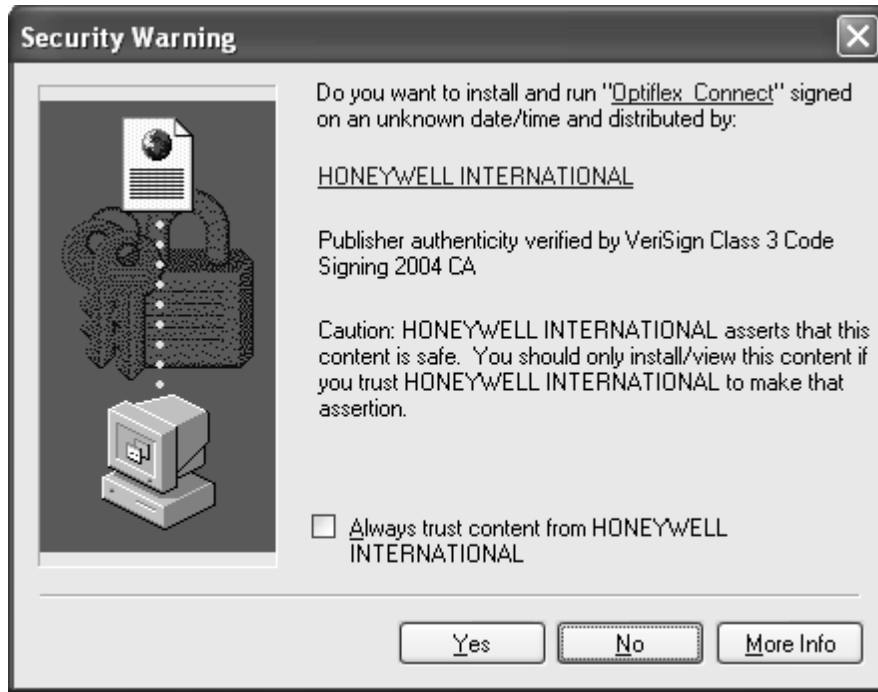


Figure 5 – Security Warning dialog box

Congratulations! You are now ready to use Optiflex Connect services.

Honeywell

171 Eileen Way, Syosset, New York 11791
Copyright © 2005 Honeywell International Inc.

www.honeywellvideo.com

